

#### 4. Sınıf İngilizce 8. Ünite My Clothes Testi Çöz

1 - 3. sorulardaki cümlelerde boş bırakılan yerlere gelebilecek ifadeleri görsellere göre işaretleyiniz.

1. I usually \_\_\_\_\_ warm clothes in winter.



- A) wearing
- B) wears
- C) wear
- D) are wearing



Cevap : C

2.

He \_\_\_\_\_ a suit and a tie today

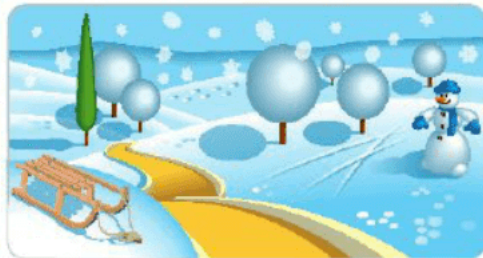
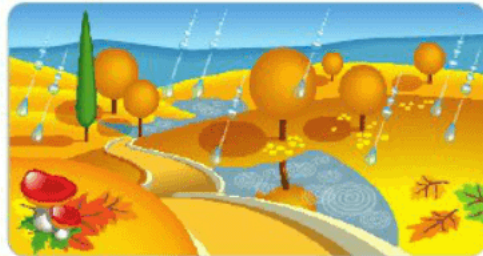
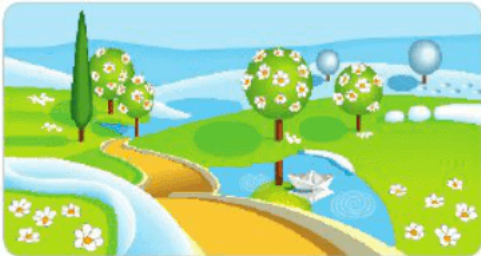


- A) wear
- B) is wearing
- C) put on
- D) am wearing



Cevap : B

3.



Winter, spring and summer are

\_\_\_\_\_ .

- A) days
- B) weeks
- C) seasons
- D) weekends

4. Konuşma balonunda boş bırakılan yere hangi ifade getirilmelidir?



- A) What does he wear today
- B) May I borrow your boots
- C) What is the weather like today
- D) What is his job

**5.** Cümlede boş bırakılan yere  
kelime getirilmelidir?



I \_\_\_\_\_ my skirt in summer

A) turn on

B) put on

C) wake up

D) sit down

Cevap : B

**6.** Cümlede boş bırakılan yere h  
kelime getirilmelidir?



May I \_\_\_\_\_ your scarf? It is cold

A) borrow

B) examine

C) cook

D) sell

Cevap : A

7. Resme göre, cümlede boş bir yere hangi kelime getirilmelidi



This is a \_\_\_\_\_ .



A) trousers

B) sweater

C) skirt

D) raincoat

Cevap : A

8. Konuşma balonunda boş bırakılan yere hangi kelime getirilmelidir?



It is rainy. \_\_\_\_\_ your umbrella.



A) Fly

B) Put on

C) Take

D) Wear

Cevap : C

9. Konuşma balonunda boş bırakılan yere hangi kelime getirilmelidir?



I \_\_\_\_\_ my t-shirt in  
spring.



A) study

B) wear

C) work

D) help

Cevap : B

10. Konuşma balonunda boş bırakılan yere hangi ifade getirilemez?



- A) Okay
- B) Sorry. It is at home
- C) Here you are
- D) OK, but it is broken

Cevap : B

11. Give me a pair of \_\_\_\_\_



- A) scarf
- B) shoes
- C) gloves
- D) hat



Cevap : B



**12.** He has got a \_\_\_\_\_. He wears it in cold weather.



- A) slippers
- B) skirt
- C) shorts
- D) coat



Cevap : B

**13.** It is snowy. Put on your \_\_\_\_\_



- A) skirt
- B) sunglasses
- C) boots
- D) umbrella



Cevap : C

**14.** Verilen kelimelerle kurallı ve anlamlı  
? bir cümle oluşturulduğunda sıralama nasıl olur?

is	weather	today	
1	2	3	
what	the	like	?
4	5	6	

- A) 4 - 1 - 3 - 2 - 5 - 6  
B) 5 - 2 - 3 - 4 - 1 - 6  
C) 5 - 2 - 1 - 3 - 6 - 4  
D) 4 - 1 - 5 - 2 - 6 - 3

Cevap : C

**15.** Diyalogda boş bırakılan yere hangi ifade getirilmelidir?



A: \_\_\_\_\_ ?

B: Here you are.

- A) What is the weather like today
- B) May I borrow your umbrella
- C) What do you wear
- D) Is it sunny today

Cevap : B

[Online Test Çöz](#)

[Pdf İndir](#)