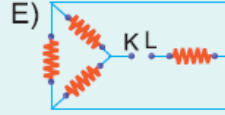
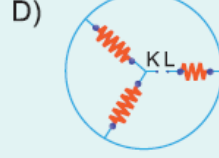
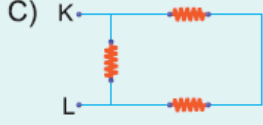
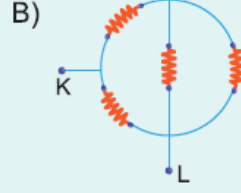
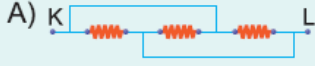
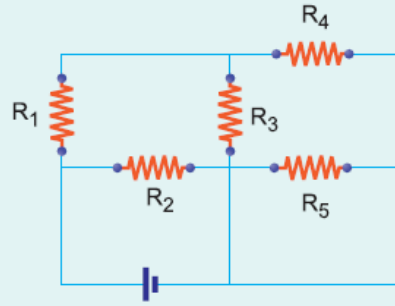


1. Aşağıdaki devre parçalarından hangisinde kısa devre vardır?



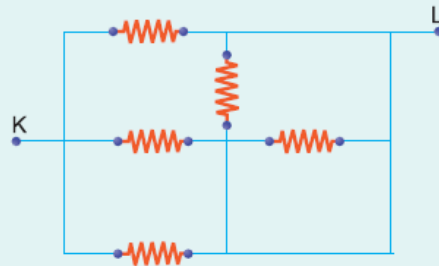
2. Şekildeki devrede hangi dirençler birbirine paralel bağlıdır?



- A) R_1 ve R_2 B) R_1 ve R_3 C) R_2 ve R_3
D) R_3 ve R_4 E) R_4 ve R_5

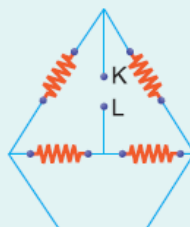
3. Şekildeki devre parçasında dirençlerin büyüklükleri R dir.

Buna göre, K ile L noktaları arasındaki eşdeğer direnç kaç R dir?



- A) $\frac{1}{4}$ B) $\frac{1}{3}$ C) $\frac{2}{5}$ D) $\frac{1}{2}$ E) $\frac{2}{3}$

4. Büyüklükleri 6Ω olan dirençlerle kurulmuş şekildeki devre parçasında K ile L noktaları arasındaki eşdeğer direnç kaç Ω dur?



A) 2

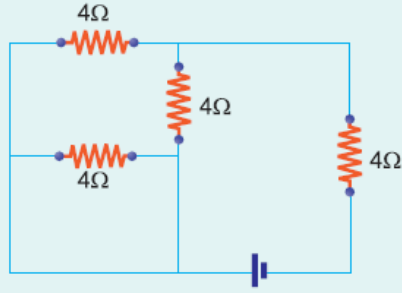
B) 3

C) 6

D) 12

E) 24

5. Şekildeki devrede eşdeğer direnç kaç Ω dur?



A) 1

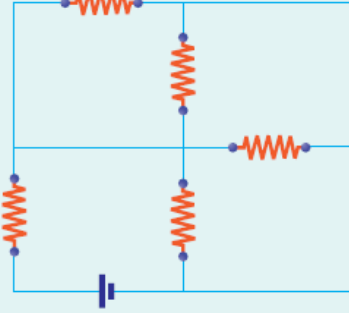
B) 2

C) 3

D) 6

E) 8

6. Büyüklükleri 8Ω olan özdeş dirençlerden kurulmuş şekildeki devrede eşdeğer direnç kaç Ω dur?



A) 2

B) 4

C) 6

D) 8

E) 10

www.supersoru.com

Cevaplar :

1)E, 2)D, 3)B, 4)C, 5)D, 6)E,