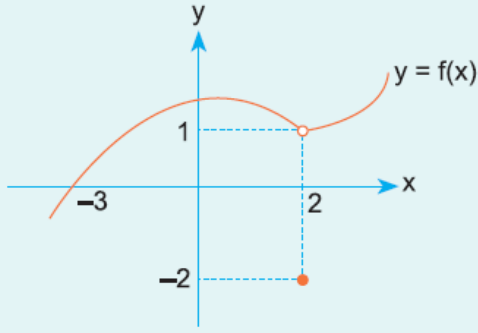


1.

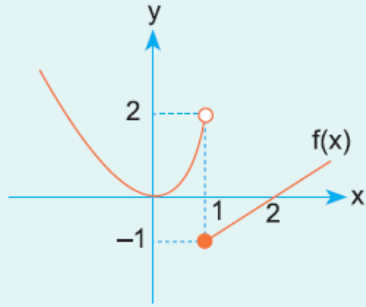


f fonksiyonunun grafiği verilmiştir.

Buna göre, aşağıdakilerden hangisi **yanlıştır**?

- A) $\lim_{x \rightarrow 2^+} f(x) = 1$ B) $\lim_{x \rightarrow 2^-} f(x) = -2$
 C) $\lim_{x \rightarrow 2} f(x) = 1$ D) $f(2) = -2$
 E) $\lim_{x \rightarrow -3} f(x) = 0$

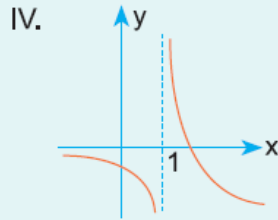
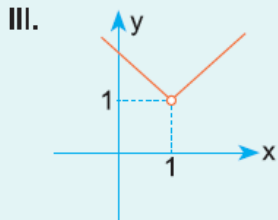
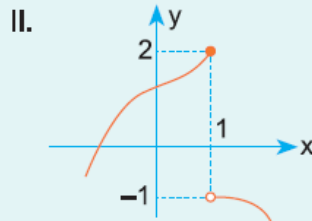
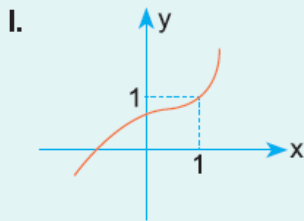
2.

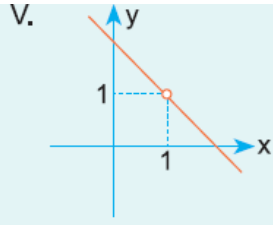


Yukarıda grafiği verilen f fonksiyonu için $\lim_{x \rightarrow 1^+} f(x)$ in değeri kaçtır?

- A) -1 B) 0 C) 1 D) 2 E) 3

3. Aşağıda verilen fonksiyonların kaç tanesinde $x = 1$ için limit vardır?





- A) 1 B) 2 C) 3 D) 4 E) 5

4. Gerçek sayılarda tanımlı f fonksiyonu için $a \in \mathbb{R}$ iken $\lim_{x \rightarrow a} f(x) = 4$ ise $\lim_{x \rightarrow a^-} f(x) \cdot \lim_{x \rightarrow a^+} f(x)$ çarpımı kaçtır?

- A) -16 B) -4 C) 0 D) 8 E) 16

www.supersonu.com

Cevaplar :

1)B, 2)A, 3)C, 4)E,