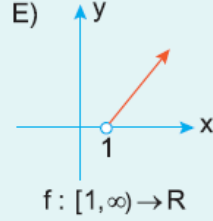
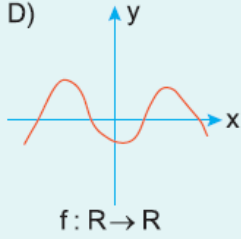
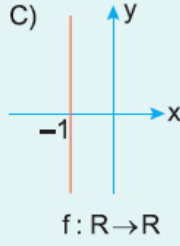
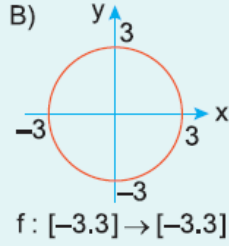
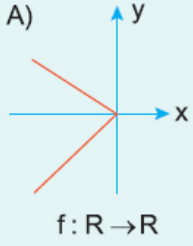


1. Aşağıdaki grafiklerden hangisi fonksiyon belirtir?



2.  $f\left(\frac{3x+4}{x+3}\right) = \frac{3x^2+2}{x-1}$

olduğuna göre,  $f(2)$  nin değeri nedir?

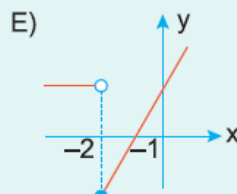
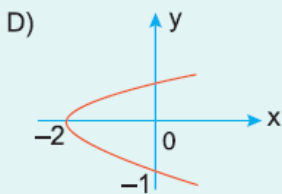
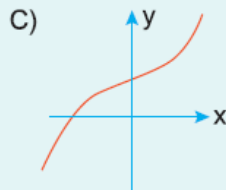
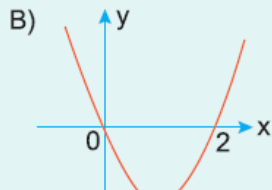
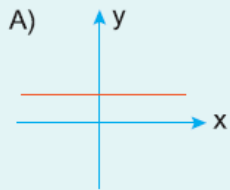
- A) 13      B) 14      C) 15      D) 16      E) 19

3.  $f(x) = \frac{3x-a}{2x+1}$  ve  $f(1) = 2$  olduğuna göre,

$a$  kaçtır?

- A) -4      B) -3      C) 2      D) 3      E) 4

4. Aşağıdaki  $\mathbb{R}$  den  $\mathbb{R}$  ye tanımlanan ve grafikleri verilen bağıntılardan hangisi fonksiyon değildir?



---

[www.supersoru.com](http://www.supersoru.com)

Cevaplar :

1)D, 2)B, 3)B, 4)D,