

1 - 3. sorulardaki cümlelerde boş bırakılan yerlere gelebilecek ifadeleri görsellere göre işaretleyiniz.

1. I usually \_\_\_\_\_ warm clothes in winter.



- A) wearing
- B) wears
- C) wear
- D) are wearing



2. He \_\_\_\_\_ a suit and a tie to

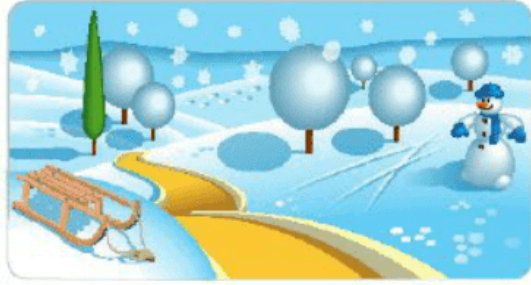


- A) wear
- B) is wearing
- C) put on
- D) am wearing





3.



Winter, spring and summer are

\_\_\_\_\_ .

A) days

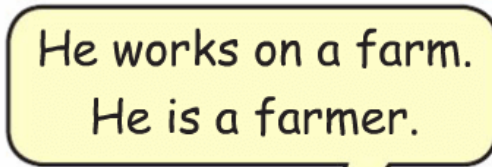
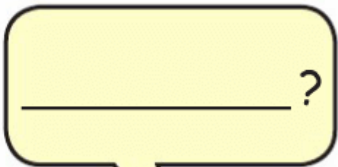
B) weeks

C) seasons

D) weekends

4. Konuşma balonunda boş bırakılan

\_\_\_\_\_ yere hangi ifade getirilmelidir?





May I \_\_\_\_\_ your scarf? It is

A) borrow

B) examine

C) cook

D) sell

**7.** Resme göre, cümlede boş bırakılan yere hangi kelime getirilmelidir?



This is a \_\_\_\_\_ .



A) trousers

B) sweater

C) skirt

D) raincoat

**8.** Konuşma balonunda boş bırakılan yere hangi kelime getirilmelidir?



It is rainy. \_\_\_\_\_ your umbrella.



A) Fly

B) Put on

C) Take

D) Wear

9.

Konuşma balonunda boş bırakılan yere hangi kelime getirilmelidir?



I \_\_\_\_\_ my t-shirt in spring.



A) study

B) wear

C) work

D) help

10. Konuşma balonunda boş bırakılan yere hangi ifade getirilemez?



- A) Okay
- B) Sorry. It is at home
- C) Here you are
- D) OK, but it is broken

11. Give me a pair of \_\_\_\_\_



- A) scarf
- B) shoes
- C) gloves
- D) hat



12. He has got a \_\_\_\_\_. He wears  
? cold weather.

A) slippers

B) skirt

C) shorts

D) coat



13. It is snowy. Put on your \_\_\_\_



A) skirt

B) sunglasses

C) boots

D) umbrella



**14.** Verilen kelimelerle kurallı ve anlamlı bir cümle oluşturulduğunda sıralama nasıl olur?

is	weather	today	
①	②	③	
what	the	like	?
④	⑤	⑥	

- A) 4 - 1 - 3 - 2 - 5 - 6  
B) 5 - 2 - 3 - 4 - 1 - 6  
C) 5 - 2 - 1 - 3 - 6 - 4  
D) 4 - 1 - 5 - 2 - 6 - 3

**15.** Diyalogda boş bırakılan yere hangisi ifade getirilmelidir?

A: \_\_\_\_\_ ?  
B: Here you are.

- A) What is the weather like today



B) May I borrow your umbrella

C) What do you wear

D) Is it sunny today

[www.supersonu.com](http://www.supersonu.com)

Cevaplar :

1)C, 2)B, 3)C, 4)D, 5)B, 6)A, 7)D, 8)C, 9)B, 10)D, 11)B, 12)D, 13)C, 14)D, 15)B,