

1. Aşağıdaki resim hangi seçenekte ifade edilmiştir?



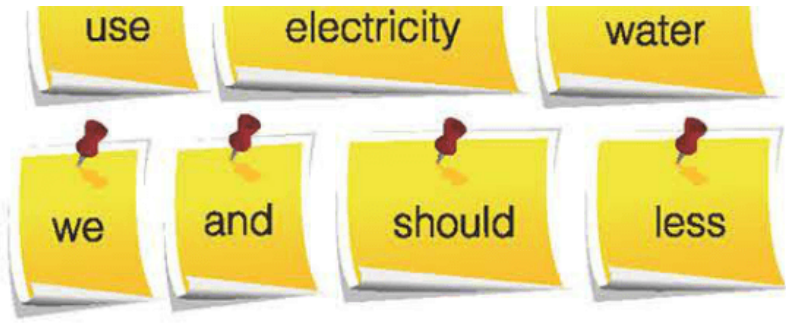
- A) Reuse B) Recycle
C) Reduce D) Repeat
2. Seçeneklerden hangisi aşağıdaki sorunun cevabı olamaz?

What should we do to protect the environment?



- A) We should recycle paper and glass.
B) We should plant trees.
C) We should make fires in the forests.
D) We should use public transportation.
3. Aşağıdaki kelimelerden oluşan anlamlı cümle hangi seçenekte ifade edilmiştir?





- A) We less should use water and electricity.
- B) Less water and electricity use we should.
- C) We should use less water and electricity.
- D) We should water and less use electricity.

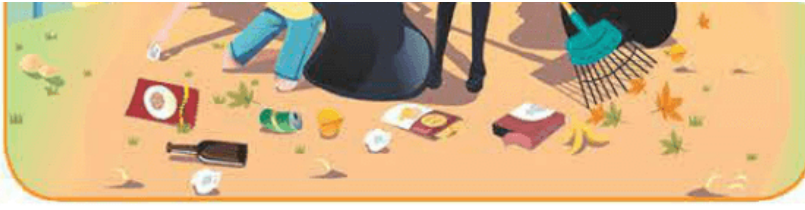
4. Aşağıdaki cümleyi uygun ifade ile tamamlayınız.

_____ too much because you are getting fat and this is not good for your health.

- A) You should eat
- B) Stop eating
- C) Prevent global warming
- D) Eat junk food

5. Aşağıdaki resim hangi seçenekte ifade edilmiştir?





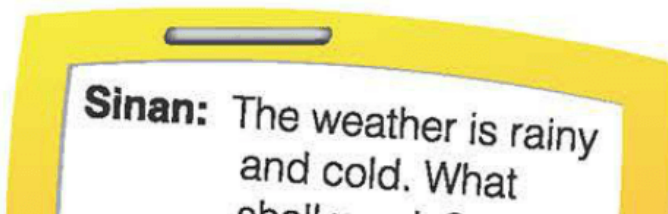
- A) The children are sunbathing.
- B) The children are cleaning the garden.
- C) The children are having an important exam.
- D) The children are protesting global warming.

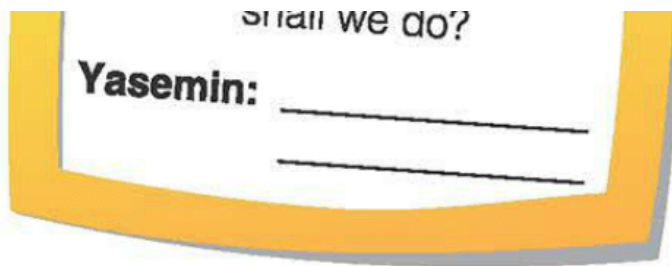
6. Aşağıdaki diyalogu uygun ifadeyle tamamlayınız.



- A) What should we eat in the morning?
- B) Where should we stop?
- C) Who should plant the trees?
- D) What shall we do to protect the environment?

7. Aşağıdaki diyalogu uygun ifadeyle tamamlayınız.





- A) What about staying at home and watching a movie?
- B) Shall we go out and have a picnic?
- C) Who shall we visit?
- D) Let's go to the beach to swim.

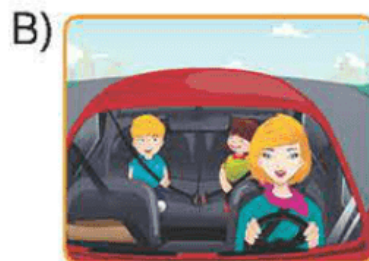
8. Aşağıdaki durum için hangi ifade söylenebilir?

She is ill and the children are making too much noise.

- A) Who is going to sing a song?
- B) Kids, can you please be quiet?
- C) Can you speak loudly?
- D) I like that you are cheerful.

9. Aşağıdaki cümle hangi seçenekte resmedilmiştir?

She is picking up rubbish and putting it into the waste bin.





10. Aşağıdaki konuşmayı uygun ifadeyle tamamlayınız.



- A) Can you give me the knife?
- B) Please, tidy it.
- C) You should be careful about environment.
- D) You should eat less.

11. Aşağıdaki resim hangi seçenekte ifade edilmiştir?



- A) You shouldn't use plastic bags.

7) You shouldn't use plastic bags.

B) You shouldn't go shopping.

C) You shouldn't use eco friendly products.

D) You shouldn't keep the environment.

12. Aşağıdaki diyalogu uygun ifadeyle tamamlayınız.



A) What a cold weather.

B) What a good idea.

C) That sounds terrible.

D) It is not a good idea.

www.supersoru.com

Cevaplar :

1)B, 2)C, 3)C, 4)B, 5)B, 6)D, 7)A, 8)B, 9)C, 10)B, 11)A, 12)B,