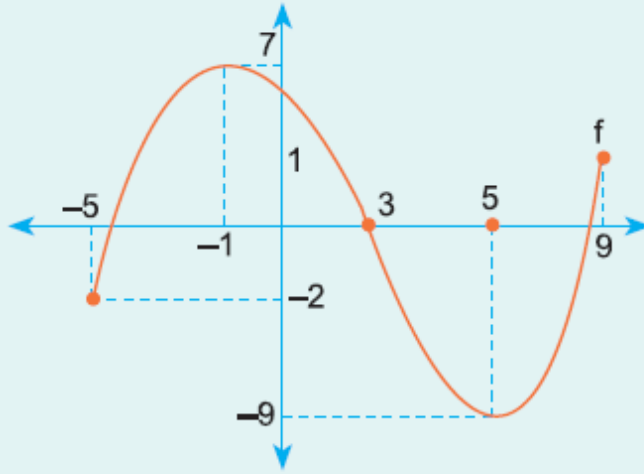


9. Sınıf Matematik Fonksiyonlar Testi Çöz 13

1.



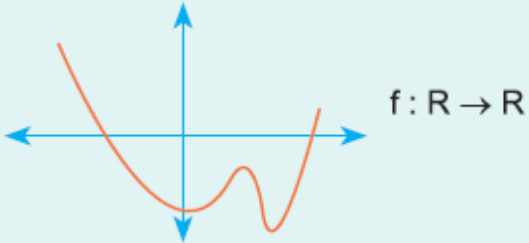
f fonksiyonunun görüntü kümesi hangisidir?

- A) $[-5, 9]$ B) $[-9, 7]$ C) $[-1, 5]$ D) $[-9, 5]$ E) $[5, 9]$

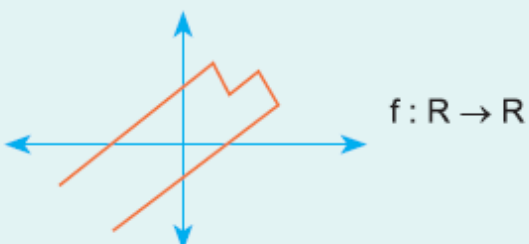
Cevap : B

2. Aşağıda grafikleri verilen ilişkilerden hangisi yada hangileri fonksiyondur?

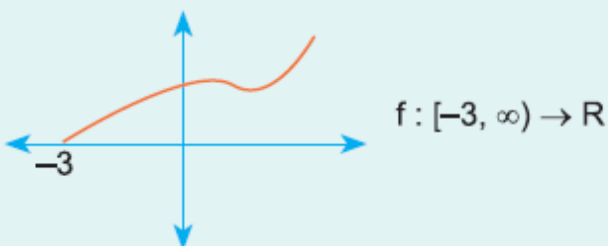
I.



II.



III.



A) Yalnız I

B) Yalnız II

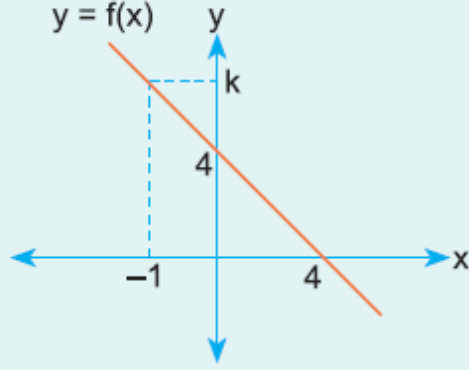
C) Yalnız III

D) I - III

E) I - II - III

Cevap : B

3.



Yukarıda $y = f(x)$ fonksiyonunun grafiği verilmiştir.

Buna göre, $f(k + 1)$ kaçtır?

A) -3

B) -2

C) -1

D) 1

E) 2

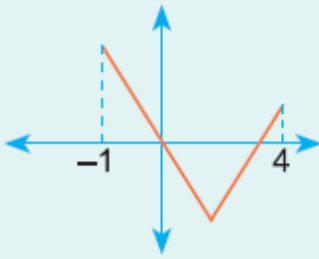
Cevap : B

4.

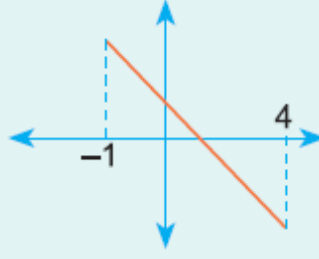
$$f(x) = |x - 3| - 2$$

fonksiyonunun $[-1, 4]$ aralığındaki grafiği aşağıdakilerden hangisidir?

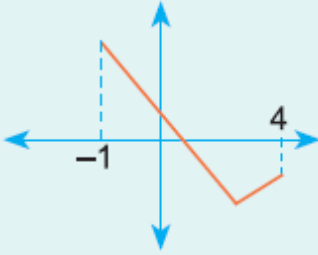
A)



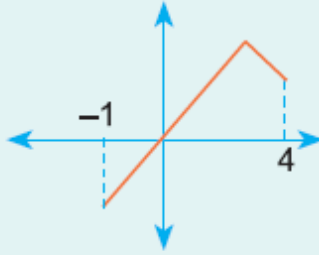
B)



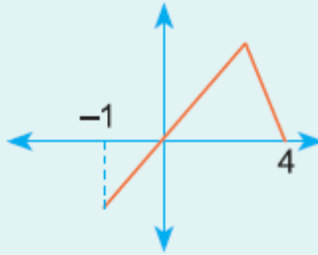
C)



D)

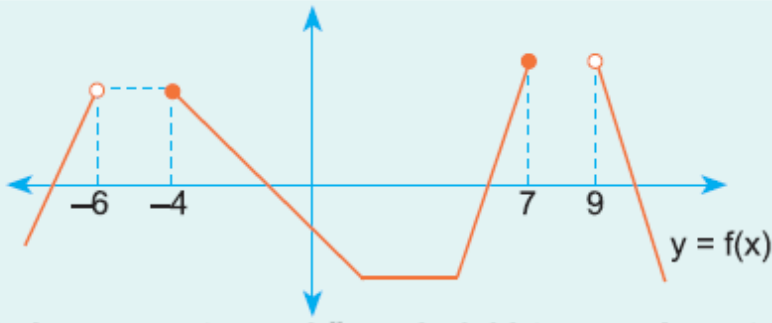


E)



Cevap : C

5.

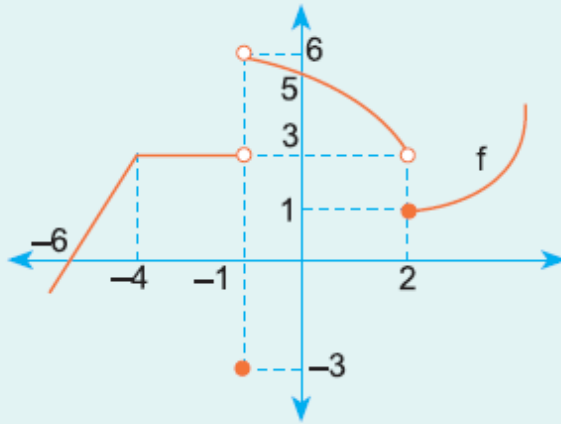


f fonksiyonunun tanım kümesindeki tamsayıların toplamı kaçtır?

- A) -7 B) -6 C) -5 D) -4 E) -3

Cevap : B

6.



Yukarıda $y = f(x)$ fonksiyonunun grafiği verilmiştir.

Buna göre, $\frac{f(-2) - f(-1) + f(-6)}{f(2) + f(-3) - f(0)}$ kaçtır?

- A) 6 B) $\frac{4}{3}$ C) $\frac{2}{5}$ D) $\frac{1}{2}$ E) -6

Cevap : B